



**KILNER**

34-1230.15

15 cm, 5 3/4"



**SCHAMBERG**

34-1241.10

10 cm, 4"



**UNNA**

34-1243.14

14 cm, 5 1/2"



**UNNA**

34-1245.14

14 cm, 5 1/2"



**WALTON**

34-1248.14

14 cm, 5 1/2"



**SAALFELD**

34-1251.10

10 cm, 4"



**FOX**



34-1258.03

3 mm



34-1258.04

4 mm



34-1258.05

5 mm



34-1258.06

6 mm



**PIFFARD**



34-1260.03

Fig. 1



34-1260.04

Fig. 2



34-1260.05

Fig. 3



**KEYES**

**34-1268.00**



**KEYES**

<b>34-1270.02</b>	2 mm
<b>34-1270.03</b>	3 mm
<b>34-1270.04</b>	4 mm
<b>34-1270.05</b>	5 mm
<b>34-1270.06</b>	6 mm
<b>34-1270.07</b>	7 mm
<b>34-1270.08</b>	8 mm



**34-1310.10**



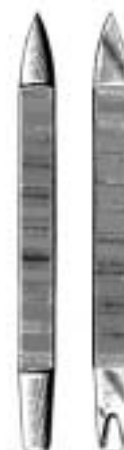
**34-1314.10**

10 cm, 4"



**34-1315.10**

10 cm, 4"



**34-1356.10** 10 cm, 4"

**34-1356.12** 12 cm, 4 3/4"



**34-1348.10**

10 cm, 4"



**34-1349.10**

10 cm, 4"



**CREDO**

**34-1370.00**

Ersatzklingen, 10 Stück  
 Spare Blades, 10 pieces  
 Lames de rechange, 10 pièces  
 Hojas de repuesto, 10 piezas

**CREDO**

**34-1369.14**

14,5 cm, 5 1/2"



34-1317.14

14 cm, 5 1/2"



34-1320.14

14 cm, 5 1/2"



TURNBULL

34-1323.11 11,5 cm, 4 1/2"

34-1323.13 13,5 cm, 5 1/4"



34-1330.13

13 cm, 5"



34-1335.11

11 cm, 4 1/4"



34-1343.10

10,5 cm, 4"